



Provided by
S&P Global

St NavStation

Extended Port Database

Providing you with the most comprehensive port directory available

- Weekly updates through our unique digital ecosystem
- Works offline and is available as a georeferenced overlay on top of your ENC holdings for optimal port-planning experience
- Contains port information and detailed information about Terminals and Berth facilities
- The most comprehensive database on the market with information for over 15500 ports worldwide, including over 26600 Port service providers/agents

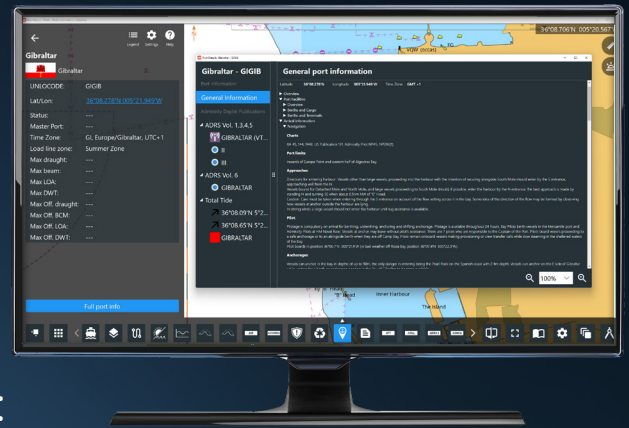
NAVTOR Suite

Tv Tr St Bx Fl Dl Re navtor.com



Quality Data & Sources

S&P Global is the exclusive source for assigning IMO ship and company numbers, ensuring unmatched accuracy and comprehensive coverage of vessel characteristics and the global newbuilding order book. Our extensive port database, combined with strong relationships with port and maritime representatives, allows S&P Global to offer you the most complete port directory available.



A wealth of data attributes such as:



COUNTRY INFORMATION:

Time zones, national holidays, government departments, currency, national regulations, ISPS designated authority



PORT DESCRIPTION:

Location, general overview, traffic figures, load line zones, maximum vessel dimensions



PRE-ARRIVAL INFORMATION:

ETA's, documentation required, communications, health regulations, customs and immigration, tandard messages, flags, notices of readiness, general notices, and regulations



NAVIGATION:

Charts, port limits, approaches, pilot information, anchorages, tidal range and flow, dock density, weather, principal navigation aids, traffic schemes, restrictions, tugs, coastguard, mooring information



GENERAL:

Repairs, drydocks, bunkers, water and stores, medical facilities, transport, crew change, consuls, banks, holidays, working hours, developments, seaman's missions, officials and visitors, fumigation, pollution control



ADDRESSES AND CONTACTS:

Chandlers, civilian authorities, pilotage authorities, port authorities, port operators, port agents, stevedores, ship repairers, towage companies, seaman's missions, port security officers and surveyors plans



BERTHS AND CARGO:

Berths, names/numbers, facilities, storage, cargo, barges, security, safety requirements and emergency contacts



BERTHS AND TERMINALS:

Tanker berths: Detailed information on berth restrictions, mooring arrangement, connections, and cargoes
Dry cargo berths: Detailed information on berth and vessel size restrictions, mooring arrangements, bunker facilities, cargoes handled and berth equipment details

If you subscribe to the Passage Planning service, some fields in the Passage plan will be auto-populated with the "Ports Extended" data.



SAVE TIME AND COSTS

NavStation includes access to an array of digital navigational information incorporated additionally as overlays on top of official ENC charts. With databases and permits automatically distributed and updated seamlessly through our cyber-secure NavBox, NAVTOR continually ensures vessels have the data they need to keep them safe, compliant and always up to date.